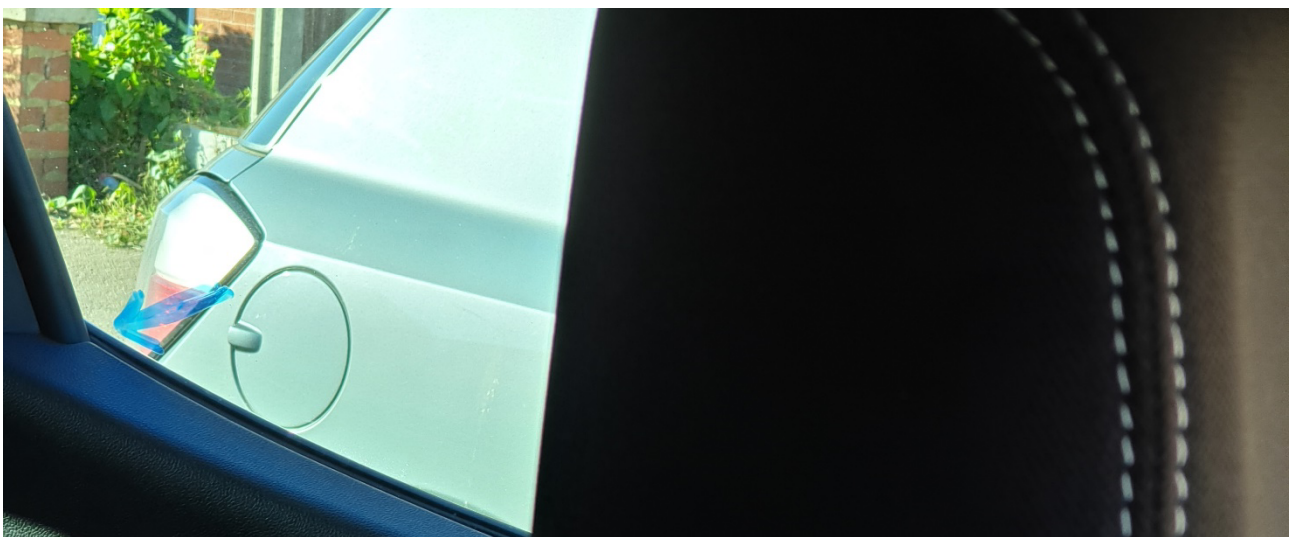


Reverse Park

1. Using MSM routine pull up alongside the target vehicle, giving a distance from 1 metre to a car doors width. Make sure you pull far enough forward that the tail end of your car is further forward than the target vehicle's tail end. One method in making sure you are further forward, is lining your door mirror up with the front of the target vehicle.



2. Handbrake on. Cancel signal, and immediately put your car in reverse (it is important that you put the car in reverse as quickly as possible. Any vehicles approaching from behind must know your intentions).
3. Slowly raise clutch to biting point.
4. **Observations** – Starting from your right blind spot, work all the way round to the left blind spot and then look over your left shoulder through directly out the rear window.
5. Slightly raise your clutch enough to make the car creep very slowly. Whilst looking out the back window and watching out for the back corner of the vehicle appearing in the nearside rear door window, you must do **Observations** around you to ensure it is safe to move.
6. Keep the car slowly moving until the back corner of the target vehicle appears in the bottom corner of the nearside rear door window. This is known as the First point of turn.



7. Do **Observations** around the car to make sure it is still safe, then turn the steering wheel (briskly) one turn to the left (not full lock. Just turn the steering wheel 360 degrees).

8. Keep doing **Observations** whilst going back until the back of the target vehicle is in line with the nearside door mirror (second point of turn), turn the steering wheel (briskly) one turn to the right. Your front wheels are now straight again.



9. Keep doing **Observations** whilst going back in a straight line until you see the kerbstone approximately a drain's width away from the back wheel(third point of turn). Turn the steering wheel full lock to the right and carefully bring the car's front in towards the kerb.



10. When you see the car is parallel with the kerb, turn your steering wheel about one and a half turns to the left in order to straighten the front wheels again, clutch down and brake.



11. Secure the car by applying the handbrake and putting the car in neutral.